

ASZ type needle valve

Dimension range	DN 15; DN 25 / NPS 1/2"; NPS 1"
Pressure range	PN 40 - 400 / Class 300 - 2500
Temperature range	- 60°C - +343°C

This inside threaded needle valve is of simple design for wide pressure range. Long life is ensured by the non-rotating, self-centering valve tip and also by the weld on valve seat. The needle valve can be made with flanged, threaded, butt welded and socket welded ends as well. The needle valve can be built in the streamline of the pipeline in the direction of the arrow located on the valve body.

Materials:

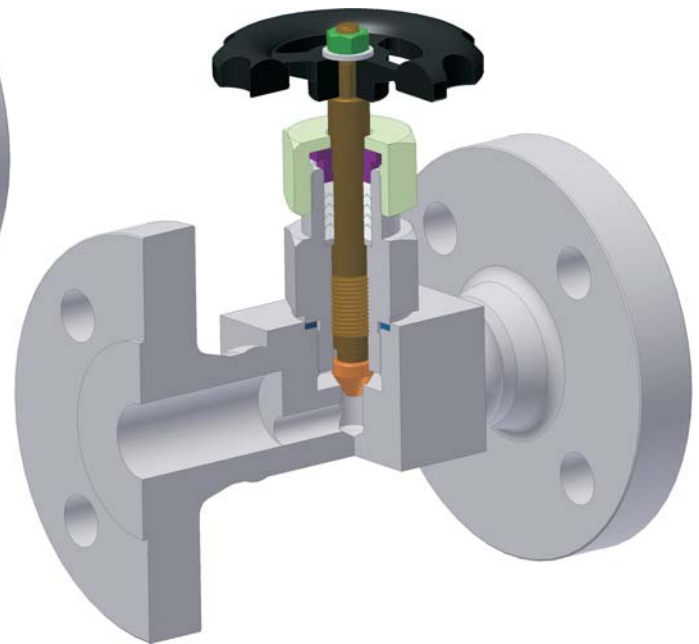
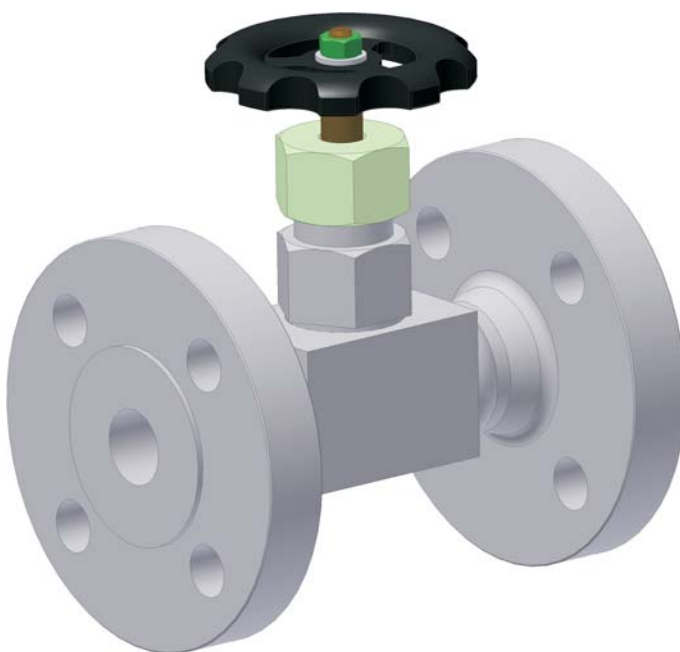
- ASTM A350 LF2
- ASTM A479 316(L)

Main features:

- Flow regulating valve
- Self-centering tip, closing on conical surface
- Weld on valve seat
- Flanged, threaded, butt welded, or socket welded ends connection

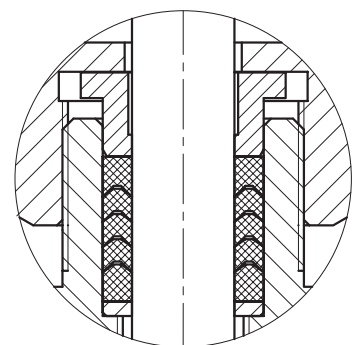
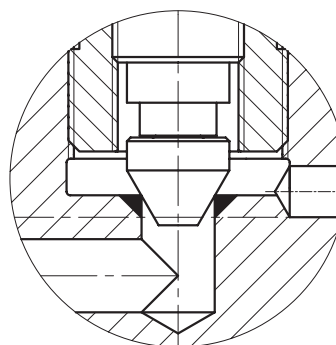
Design possibilities:

- On customer demand



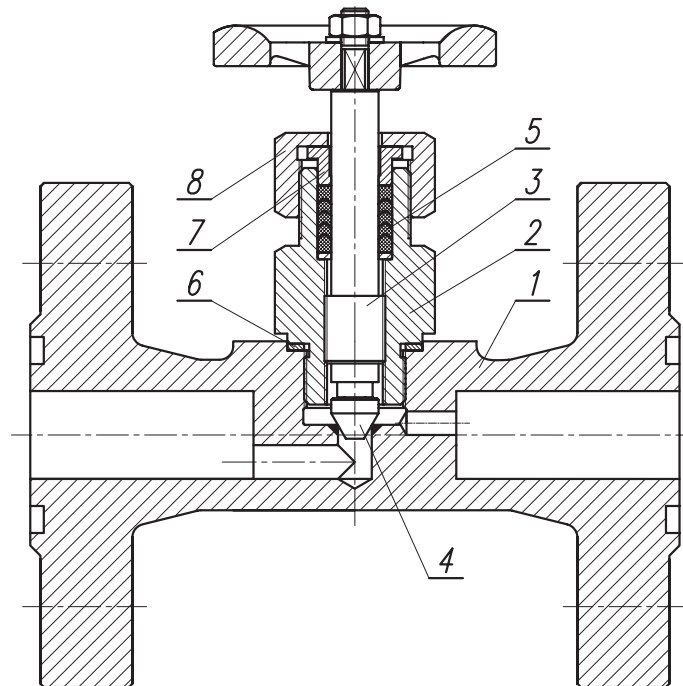
Design standards:

- Face to face length: ASME B16.10; EN 558
- Socket welded type: ASME B16.11; DIN 3239
- Butt welded type: ASME B16.25; EN 12627
- Threaded type: ASME B1.20.1 NPT
- Flanged type: ASME B16.5; EN 1092-1; GOST 12815; GOST 12821
- Pressure test: API 598; EN 12266-1
- NACE design: NACE MR0175 / ISO 15156



List of the main components

ASZ type needle valve



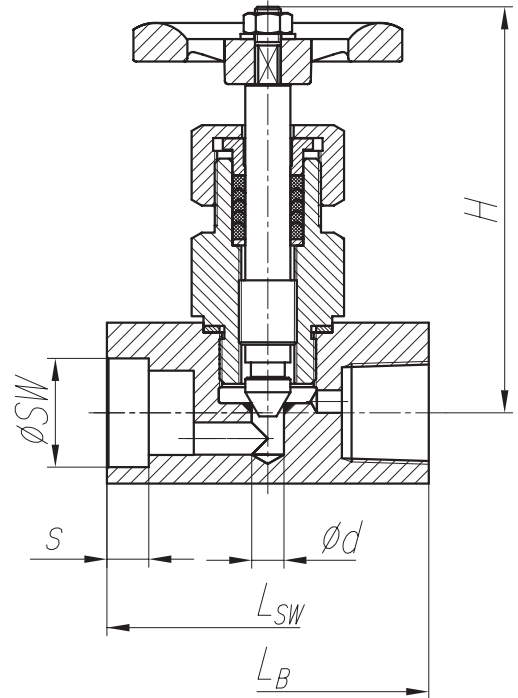
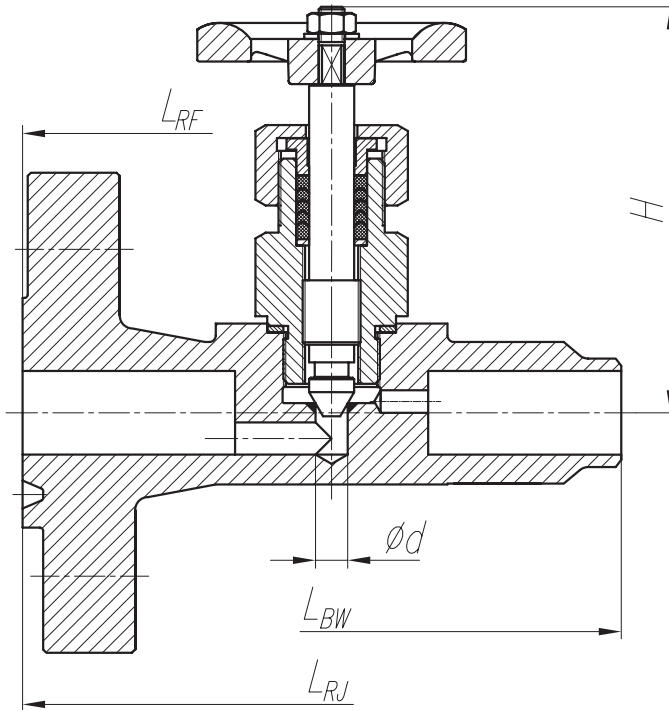
ASZ

N°	Description	Standard design	NACE design	Corrosive design
		T= -46°C ~ +343°C	T= -46°C ~ +343°C	T= -60°C ~ +300°C
1	Body	ASTM A350 LF2 +13Cr	ASTM A350 LF2 +13Cr	ASTM A479 316(L)
2	Gasket cage	ASTM A350 LF2	ASTM A350 LF2	ASTM A479 316(L)
3	Valve shaft	ASTM A276 410	ASTM A182 F6NM	ASTM A276 316(L)
4	Valve head	ASTM A276 410	ASTM A564 630	ASTM A564 630
5	Gland packing	PTFE Grafit	PTFE Grafit	PTFE Grafit
6	Body-bonnet packing	316L+Grafit 316L	316L	316L+Grafit 316L
7	Stuffing box gland	ASTM A276 410	ASTM A182 F6NM	ASTM A276 316(L)
8	Gland nut	ASTM A350 LF2	ASTM A350 LF2	ASTM A276 316(L)

- For other mediums, orders on material quality is based on temperature.

Chart of dimensions

ASZ type needle valve
ANSI



ASZ

CLASS 300

NPS	Ød (mm)	L _{RF} (mm)	L _{RJ} (mm)	L _{BW} (mm)	H (mm)
1/2"	6	152	163	152	120
1"	10	203	216	203	126

CLASS 600

NPS	Ød (mm)	L _{RF} (mm)	L _{RJ} (mm)	L _{BW} (mm)	H (mm)
1/2"	6	165	163	165	120
1"	10	216	216	216	126

CLASS 900; CLASS 1500

NPS	Ød (mm)	L _{RF} (mm)	L _{RJ} (mm)	L _{BW} (mm)	H (mm)
1/2"	6	216	216	216	120
1"	10	254	254	254	126

CLASS 2500

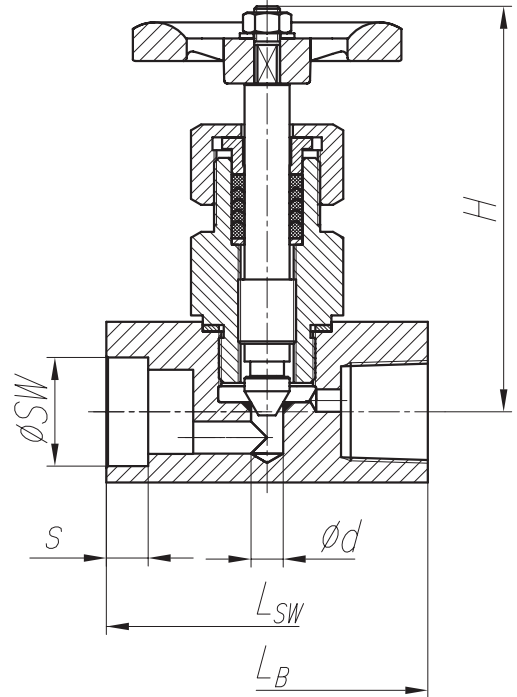
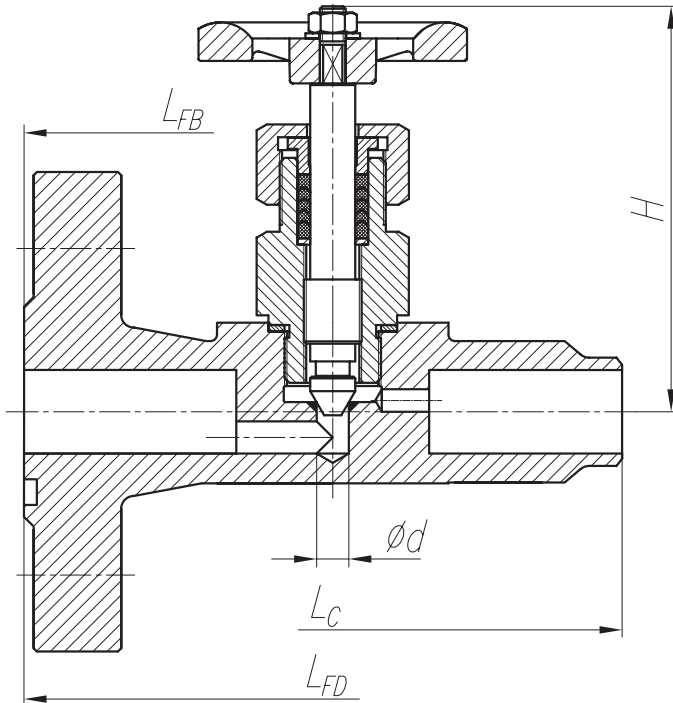
NPS	Ød (mm)	L _{RF} (mm)	L _{RJ} (mm)	L _{BW} (mm)	H (mm)
1/2"	6	264	264	264	120
1"	10	308	308	308	126

CLASS 800; CLASS 1500; CLASS 2500

NPS	Ød (mm)	L _{SW} ; L _B (mm)	Ø _{SW} (mm)	S _{min} (mm)	H (mm)
1/2"	6	80	21,8	10	120
1"	10	100	33,9	13	126

Chart of dimensions

ASZ type needle valve
EN



ASZ

PN 40 - 160

DN	$\varnothing d$ (mm)	$L_{FB}; L_{FD}$ (mm)	L_C (mm)	$L_{SW}; L_B$ (mm)	$\varnothing SW$ (mm)	S_{min} (mm)	H (mm)
15	6	130	130	80	21,8	10	120
25	10	160	160	100	33,9	13	126

PN 250 - 400

DN	$\varnothing d$ (mm)	$L_{FB}; L_{FD}$ (mm)	L_C (mm)	$L_{SW}; L_B$ (mm)	$\varnothing SW$ (mm)	S_{min} (mm)	H (mm)
15	6	210	210	80	21,8	10	120
25	10	230	230	100	33,9	13	126