

LVCS-2 type swing-check valve

Dimension range	DN 50 - 150 / NPS 2" - 6"
Pressure range	PN 16 - 250 / CLASS 150 - 1500
Temperature range	- 60°C - +427°C

This swing type check valve is made for wide pressure-, and temperature ranges. The valve can be installed only for one way streams. In case of back stream the valve closes due to own weight of the closing element and also the pressure of the medium. The valve body is welded for smaller sizes and of casted design for bigger sizes. The valve seat and the disc is welded with Stellite 6 for the purpose of excellent wearing resistance. The valve seat can be made in welded or renewable, threaded versions. The sealing of the bonnet is highly flexible spiral wound gasket. For higher pressures the sealing is made of stainless steel gasket ring, or self-sealing graphite ring.

Materials:

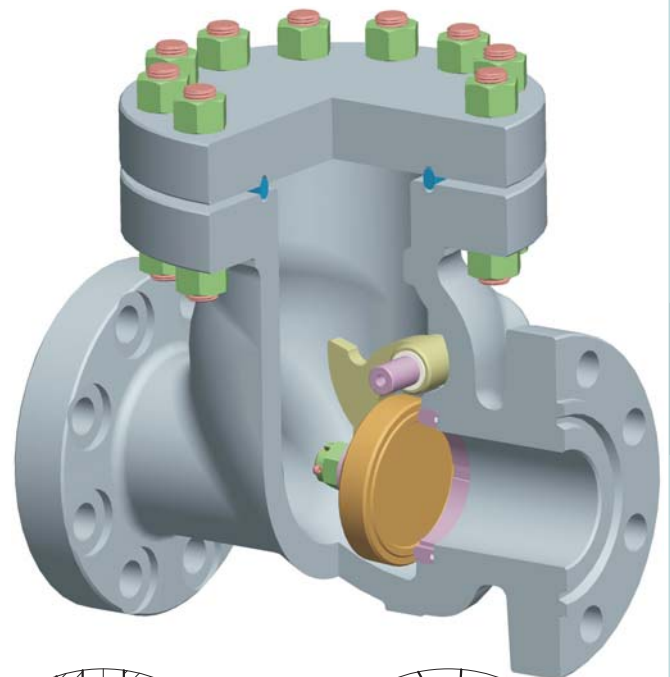
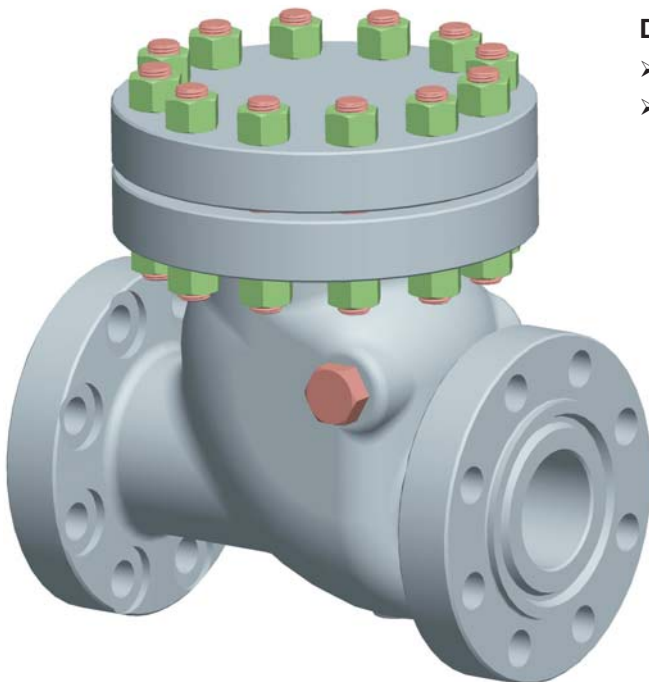
- ASTM A350 LF2; ASTM A352 LCC
- ASTM A479 316(L); ASTM A351 CF8M

Main features:

- Cast or welded body
- Bolted bonnet
- Self adjusting disc
- Flanged, or butt welded ends

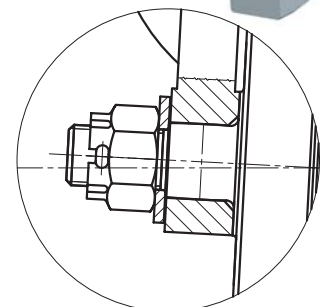
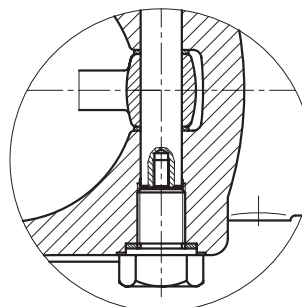
Design possibilities:

- Renewable valve seat
- Pressure seal bonnet in case of higher pressures



Design standards:

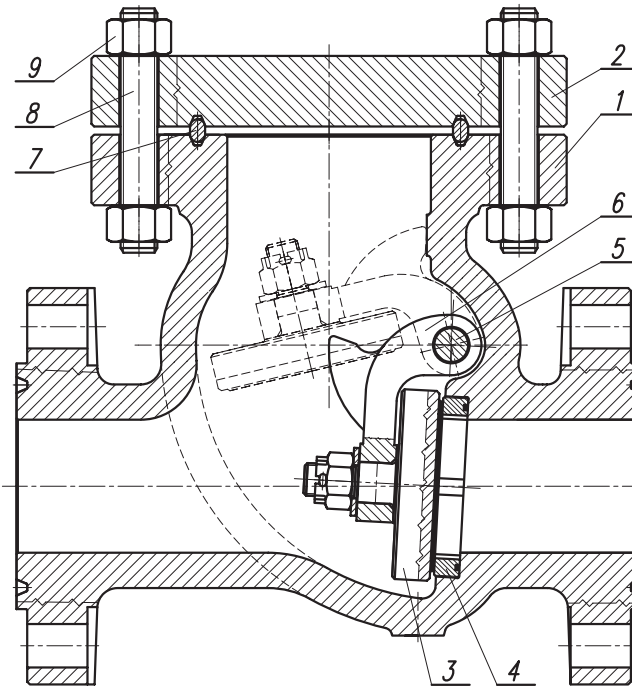
- Construction: API 6D / ISO 14313
- Face to face length: ASME B16.10
- Butt welded type: ASME B16.25; EN 12627
- Flanged type: ASME B16.5; EN 1092-1; GOST 12815; GOST 12821
- Pressure test: API 6D; EN 12266-1
- NACE design: NACE MR0175 / ISO 15156



LVCS-2

List of the main components

LVCS-2 type swing-check valve



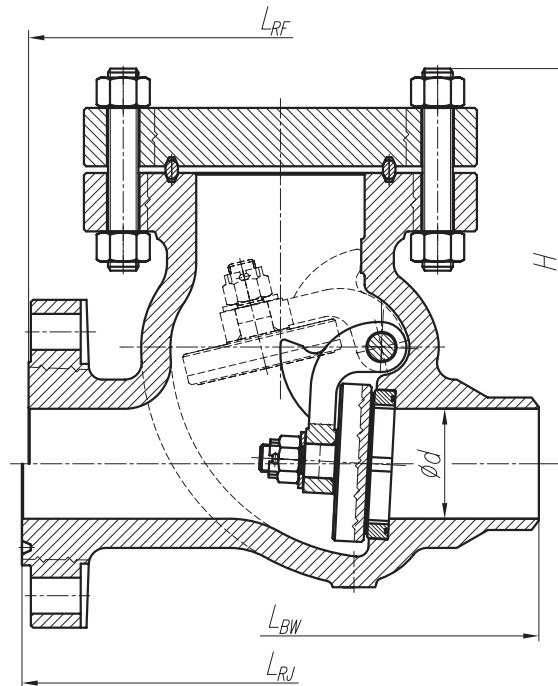
N°	Description	Standard design	NACE design	Corrosion-resistant design
		T= -46°C ~ +343°C	T= -46°C ~ +343°C	T= -60°C ~ +427°C
1	Body	ASTM A352 LCC ASTM A350 LF2	ASTM A352 LCC ASTM A350 LF2	ASTM A351 CF8M ASTM A479 316(L)
2	Bonnet	ASTM A350 LF2	ASTM A350 LF2	ASTM A479 316(L)
3	Disc	ASTM A350 LF2 +HF	ASTM A276 316(L) +HF	ASTM A479 316(L) +HF
4	Valve seat	HF ASTM A276 316(L) +HF	HF ASTM A276 316(L) +HF	HF ASTM A276 316(L) +HF
5	Axle	ASTM A276 410	ASTM A564 630	ASTM A276 316(L)
6	Swinging lever	ASTM A352 LCC ASTM A350 LF2	ASTM A351 CF8M ASTM A276 316(L)	ASTM A351 CF8M ASTM A276 316(L)
7	Body-bonnet packing	Spiral Wound 316L+Grafit	ASTM A276 316(L)	Spiral Wound 316L+Grafit
8	Bolt	ASTM A320 L7	ASTM A320 L7M	ASTM A193 B8M Cl.2
9	Nut	ASTM A194 Gr.4	ASTM A194 2HM	ASTM A194 8M

- HF = Stellite 6 welding-on (min. 350 HB)
- For other mediums, orders on material quality is based on temperature

LVCS-2

Chart of dimensions

LVCS-2 type swing-check valve ANSI



CLASS 150

NPS	Ød (mm)	L _{RF} * (mm)	L _{RJ} * (mm)	L _{BW} (mm)	H (mm)
2"	49	267	283	267	150
2 1/2"	62	292	308	292	170
3"	74	318	333	318	180
4"	100	356	371	356	202
6"	150	445	460	445	255

CLASS 300

NPS	Ød (mm)	L _{RF} (mm)	L _{RJ} (mm)	L _{BW} (mm)	H (mm)
2"	49	267	283	267	165
2 1/2"	62	292	308	292	185
3"	74	318	333	318	203
4"	100	356	371	356	232
6"	150	445	460	445	290

* CLASS 300 face to face length

CLASS 600

NPS	Ød (mm)	L _{RF} * (mm)	L _{RJ} * (mm)	L _{BW} (mm)	H (mm)
2"	49	292	295	292	203
2 1/2"	62	330	333	330	238
3"	74	356	359	356	285
4"	100	432	435	432	315
6"	150	559	562	559	383

CLASS 900

NPS	Ød (mm)	L _{RF} (mm)	L _{RJ} (mm)	L _{BW} (mm)	H (mm)
2"	49	368	371	368	225
2 1/2"	62	419	422	419	265
3"	74	381	384	381	315
4"	100	457	460	457	350
6"	150	610	613	610	425

CLASS 1500

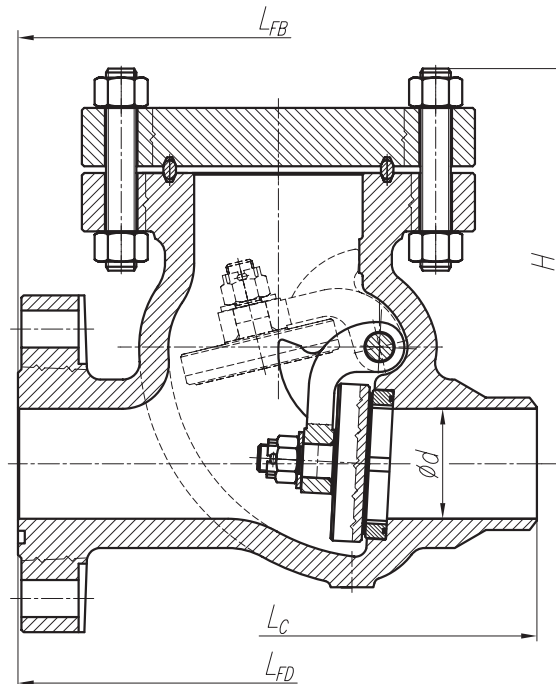
NPS	Ød (mm)	L _{RF} (mm)	L _{RJ} (mm)	L _{BW} (mm)	H (mm)
2"	49	368	371	368	245
2 1/2"	62	419	422	419	285
3"	74	470	473	470	340
4"	100	546	549	546	380
6"	144	705	711	705	460

LVCS-2

Chart of dimensions

LVCS-2 type swing-check valve

EN



PN 16; PN 25

DN	$\varnothing d$ (mm)	$L_{FB}; L_{FD}$ (mm)	L_c (mm)	H (mm)
50	49	267	267	150
65	62	292	292	170
80	74	318	318	180
100	100	356	356	202
150	150	445	445	255

PN 40

DN	$\varnothing d$ (mm)	$L_{FB}; L_{FD}$ (mm)	L_c (mm)	H (mm)
50	49	267	267	165
65	62	292	292	185
80	74	318	318	203
100	100	356	356	232
150	150	445	445	290

PN 63

DN	$\varnothing d$ (mm)	$L_{FB}; L_{FD}$ (mm)	L_c (mm)	H (mm)
50	49	292	292	203
65	62	330	330	238
80	74	356	356	285
100	100	406	406	315
150	150	495	495	383

PN 100

DN	$\varnothing d$ (mm)	$L_{FB}; L_{FD}$ (mm)	L_c (mm)	H (mm)
50	49	292	292	203
65	62	330	330	238
80	74	356	356	285
100	100	432	432	315
150	150	559	559	383

PN 160

DN	$\varnothing d$ (mm)	$L_{FB}; L_{FD}$ (mm)	L_c (mm)	H (mm)
50	49	368	368	225
65	62	419	419	265
80	74	381	381	315
100	100	457	457	350
150	150	610	610	425

PN 250

DN	$\varnothing d$ (mm)	$L_{FB}; L_{FD}$ (mm)	L_c (mm)	H (mm)
50	49	368	368	245
65	62	419	419	285
80	74	470	470	340
100	100	546	546	380
150	144	705	705	460

LVCS-2